

AV ESSENTIALS



HDMI CABLES

Lindy HDMI cables are your go-to option for audio and video connections, ensuring crystal-clear transmission between various devices. With their robust construction, these cables are built to withstand demanding usage, delivering a seamless experience for high-definition content delivery. Whether in the world of professional audiovisual setups or personal entertainment systems, Lindy HDMI cables provide reliable performance you can count on.

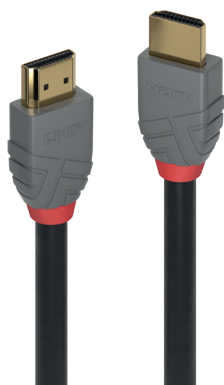
BLACK LINE HDMI CABLE



- HDMI 2.0 cable for home, small office applications and entry level high resolution solutions
- Supports UHD 4K resolutions up to 4096x2160@60Hz

0.5m	No. 36470
1m	No. 36471
2m	No. 36472
3m	No. 36473
5m	No. 36474
7.5m	No. 36467
10m	No. 36468
15m	No. 36469

ANTHRA LINE HDMI CABLE



- Professional choice HDMI 2.0 cable for commercial and high performance AV and IT installations
- Supports UHD 4K resolutions up to 4096x2160@60Hz

0.3m	No. 36960
0.5m	No. 36961
1m	No. 36962
2m	No. 36963
3m	No. 36964
5m	No. 36965
7.5m	No. 36966
10m	No. 36967
15m	No. 36968
20m	No. 36969

FIBRE OPTIC HYBRID HDMI 8K60 CABLE



- Long distance HDMI solution
- Hybrid design combines copper and fibre optic cable for reliable extended performance
- Supports video resolutions up to UHD 8K 7680x4320@60Hz and 4K 4096x2160@120Hz

10m	No. 38510
15m	No. 38511
20m	No. 38512
30m	No. 38513
40m	No. 38514
50m	No. 38515

USB TYPE C CABLES

Experience the power of Lindy USB Type C cables, featuring robust construction and high-speed capabilities. These cables enable effortless information sharing and efficient technology integration, making them ideal for a wide range of AV applications.

Stay at the forefront of technology with Lindy's reliable and versatile Type C cables, ensuring a seamless AV experience in various settings.

3m USB 3.2 GEN 2 C/C ACTIVE CABLE



- 3m USB 3.2 Gen 2 Active Cable for data and video extension
- Data transfer rates up to 10Gbps
- Supports DisplayPort 1.4 Alternate Mode
- Supports video resolutions up to UHD 8K 7680x4320@60Hz and 4K 4096x2160@120Hz

 No. 43348

5m ACTIVE USB 3.2 GEN 2 C/C CABLE



- 5m USB 3.2 Gen 2 Active Cable for data and video extension
- Data transfer rates up to 10Gbps
- Supports DisplayPort 1.4 Alternate Mode
- Supports video resolutions up to UHD 8K 7680x4320@60Hz and 4K 4096x2160@120Hz

 No. 43308

10m USB 3.2 GEN 1 & DP 1.4 TYPE C HYBRID CABLE



- 10m USB 3.2 Gen 1 & DP 1.4 Type C Hybrid Cable for data and video extension
- Data transfer rates up to 5Gbps
- Supports DisplayPort 1.4 Alternate Mode with video resolutions up to 4K 3840x2160@60Hz
- Supports Power Delivery up to 60W (20V 3A)

 No. 43333

USB EXTENSION SYSTEM PRO

Surpass traditional USB distance constraints with the Lindy Active Extension System Pro. This innovative system utilises advanced repeater technology to extend USB signals seamlessly. Available in both USB 2.0 and USB 3.0/3.2 versions, these cables can function as standalone extensions or be daisy-chained to reach distances up to 60m for USB 2.0 and 40m for USB 3.0/3.2.

A variety of different configuration options are available. For a bespoke setup to meet your needs, please reach out to us and we'll be happy to suggest a customized solution just for you.

USB 3.0 A TO A ACTIVE EXTENSION SYSTEM PRO



- Provides an extended connection between a computer and USB 3.0 device
- Can be used standalone or daisy-chained to create bespoke extension systems of up to 40m
- USB A Male to A Female

8m	No. 43158
10m	No. 43157
15m	No. 43229
20m	No. 43361
30m	No. 43362
10m with 4 Port Hub	No. 43159

USB 2.0 A TO A ACTIVE EXTENSION SYSTEM PRO



- Provides an extended connection between a computer and USB 2.0 device
- Can be used standalone or daisy-chained to create bespoke extension systems of up to 60m
- USB A Male to A Female

8m	No. 42780
12m	No. 42782
30m	No. 42923
8m with 4 Port Hub	No. 42781
12m with 4 Port Hub	No. 42783

USB 3.2 GEN 1 C TO A ACTIVE EXTENSION SYSTEM PRO



- Provides an extended connection between a USB Type C equipped computer and a USB Type A device
- Can be used standalone or as part of the Lindy Active Extension System Pro (see above) to create bespoke extension systems of up to 40m
- USB Type C Male to A Female

5m	No. 43380
8m	No. 43381

USB 3.2 GEN 1 A TO C ACTIVE EXTENSION



- Can be used as a single extension or is compatible with the USB 3.0 Extension System Pro when used as the last segment in a daisy chain
- USB Type A Male to Type C Female

10m	No. 43376
20m	No. 43375

NEED TO EXTEND MULTIPLE USB DEVICES?



Use the 4 Port Hub Extensions to provide extended reach to multiple USB devices. 8m and 12m USB 2.0, and 10m USB 3.0 versions are available. See the tables above.

USB 2.0 & USB 3.0 ACTIVE EXTENSIONS

Effortlessly extend between a PC and USB devices. Choose USB 2.0 variants for swift 480Mbps transfers or increase speed with USB 3.0 boasting a rapid 5Gbps. Each cable features USB Type A Male to Type A Female connectors.

5m USB 2.0 SLIM ACTIVE EXTENSION



- Supports transfer rates up to 480Mbps
- Chain up to 5 cables for a 25m reach
- Slim design eliminating the need for bulky plugs
- USB Type A Male to Type A Female

No. 42817

20m USB 2.0 ACTIVE EXTENSION



- Supports transfer rates up to 480Mbps
- Chain 2 cables for a 40m reach
- USB Type A Male to Type A Female

No. 42631

5m USB 3.0 ACTIVE EXTENSION



- Supports transfer rates up to 5Gbps
- For even greater distances simply connect 2 cables in series
- USB Type A Male to Type A Female

No. 43155

10m / 15m USB 3.0 ACTIVE EXTENSION



- 10m and 15m versions
- Chain 2 of the same cables together (to reach 20m or 30m)
- Supports an external power supply (not included) for use with high power devices
- USB Type A Male to Type A Female

10m	No. 43156
15m	No. 43099

3m / 15m USB 3.0 SLIM ACTIVE EXTENSION



- 3m and 15m versions
- Slimmer design eliminating the need for bulkier plugs
- Supports transfer rates up to 5Gbps
- For longer reach, chain cables together (up to 4 cables for the 3m version; 2 cables for the 15m version)
- USB Type A Male to Type A Female

3m	No. 43353
15m	No. 43322

LOCKING NETWORK CABLE

The Lindy Cat.6A Locking Network Cable is a simple yet highly effective way of preventing accidental or malicious removal of cables on your network. It features an innovative, tamper resistant design to prevent unauthorized removal.

The gold plated contacts ensure reliable, corrosion free connections and provide optimal signal integrity.

WHY YOU NEED IT

EXPANDS security level with key-locked plugs, ensuring removal only with the provided key

SUPPORTS bandwidths of up to 500MHz

FEATURES gold plated pins for better conductivity and elimination of signal loss

PROVIDES easy plug and play installation

CAT.6A S/FTP LOCKING NETWORK CABLE, GREY



- Twisted Pair Patch Cable with RJ45 connectors
- Fully tamper resistant; key required to release the secure lock
- Cat.6A S/FTP PIMF, LSZH

0.3m	No. 47600
0.5m	No. 47601
1m	No. 47602
1.5m	No. 47603
2m	No. 47604
3m	No. 47605
5m	No. 47606
10m	No. 47607
15m	No. 47608
20m	No. 47609



To use, insert the cable into the RJ-45 port and push in the locking mechanism. The cable is now secure.



Use the supplied key to release the locking mechanism and then simply remove the cable.

DIFFERENTIATE YOUR NETWORK WITH A HUGE RANGE OF COLOURS

Network cables discreetly facilitate data transmission and foster communication among a variety of devices, often operating in the background as the overlooked champions of our interconnected world.

Lindy Ethernet cables play a pivotal role in networking, audio-visual setups, and countless other applications.

Whether you're plugging in your computer to access the internet, or ensuring data flows seamlessly between servers in a data centre, patch cables are the dependable links that bridge the gap and keep our digital world running smoothly.



Colour code your network so systems can be easily identified and mission-critical cabling is clearly recognizable

WHY YOU NEED THEM

PROVIDES endless varieties. Lindy network cables are available in 9 different colours and lengths ranging from 0.3m to 30m

EQUIPPED with a connector designed to safeguard the latch and featuring gold-plated contacts

FEATURES S/FTP and U/UTP network cables that support bandwidths of up to 250MHz and 600MHz, respectively

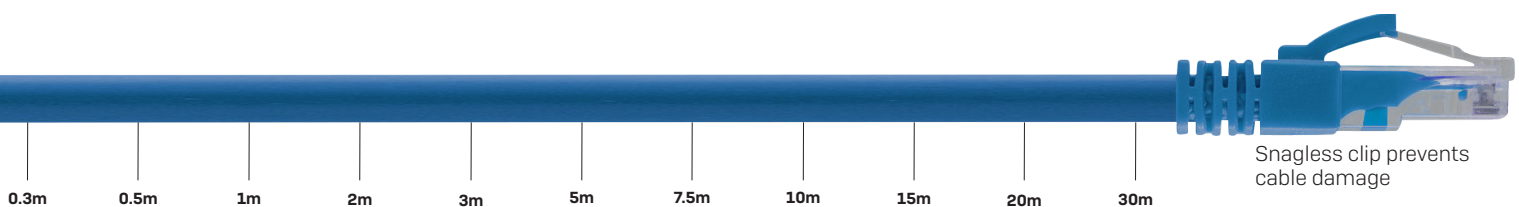
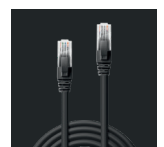
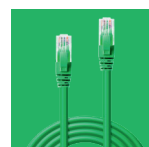
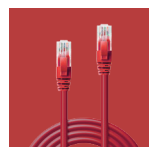
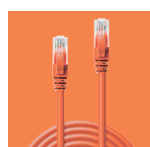
ENSURES reliability with fully QC tested cables that are RoHS, REACH, and UL compliance certified, all supported by a 10-year warranty.

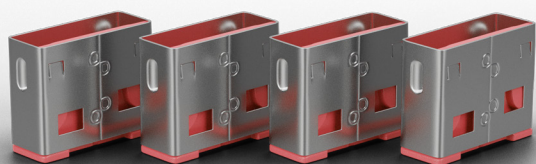
ROHS
COMPLIANT

REACH
COMPLIANT

UL
COMPLIANT
CERTIFIED

ISO/
IEC 11801
COMPLIANT





PORT BLOCKERS

USB Port Blockers are useful little devices, used to physically prevent access to USB ports in public spaces.

When paired with corresponding colour-coded keys, these blockers become an effective solution, safeguarding USB ports from unauthorized insertion of pen drives, USB mass storage and mobile devices. Particularly useful for shared workstations and devices in public spaces, USB Port Blockers contribute to maintaining the security and integrity of educational technology setups.

WHAT THEY DO

CREATES a physical barrier to unauthorised access to USB ports

EXPANDS security level when used together with software solutions

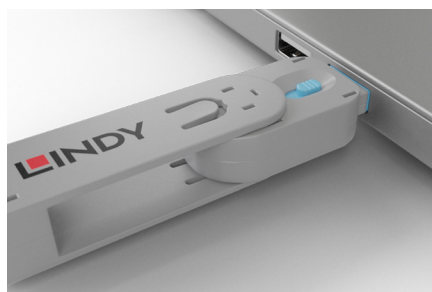
PROVIDES quick and easy installation

DESIGNED to be used in combination with the key of the same colour

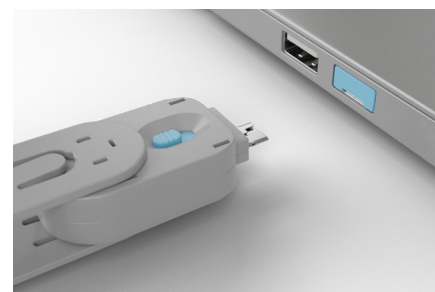
HOW THEY WORK



1. A lock is attached to the key and inserted into a USB port.

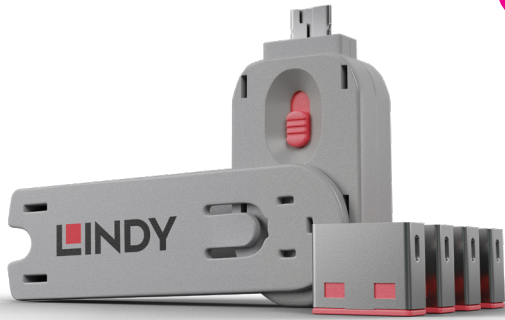


2. The sliding mechanism on the key is then released leaving the lock in place.



3. To remove the lock the key is inserted into the lock and pulled back, simple!

PINK, USB TYPE A



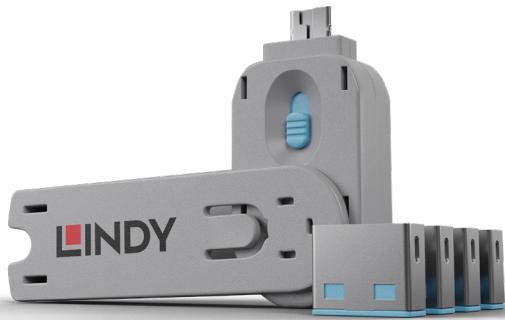
Pack of 4 Locks & Key	No. 40450
Pack of 10 Additional Locks	No. 40460
Additional Key	No. 40620

GREEN, USB TYPE A



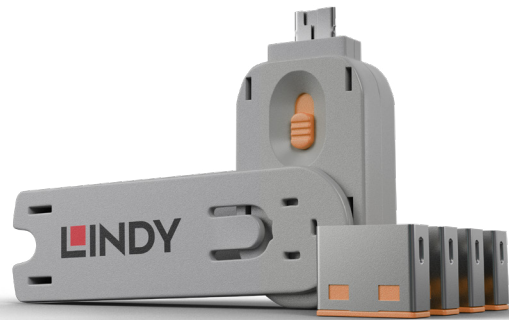
Pack of 4 Locks & Key	No. 40451
Pack of 10 Additional Locks	No. 40461
Additional Key	No. 40621

BLUE, USB TYPE A



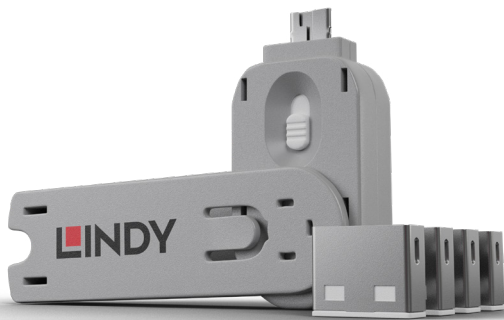
Pack of 4 Locks & Key	No. 40452
Pack of 10 Additional Locks	No. 40462
Additional Key	No. 40622

ORANGE, USB TYPE A



Pack of 4 Locks & Key	No. 40453
Pack of 10 Additional Locks	No. 40463
Additional Key	No. 40623

WHITE, USB TYPE A



Pack of 4 Locks & Key	No. 40454
Pack of 10 Additional Locks	No. 40464
Additional Key	No. 40624



Purchase additional locks to colour code your network or use additional keys to add more administrators.



RJ-45 PORT BLOCKERS

The set includes ten RJ-45 locks, available in four different colours, and one key. These locks can be used to effectively block up to 10 open network ports, preventing unauthorized cable or device connections.

WHAT THEY DO

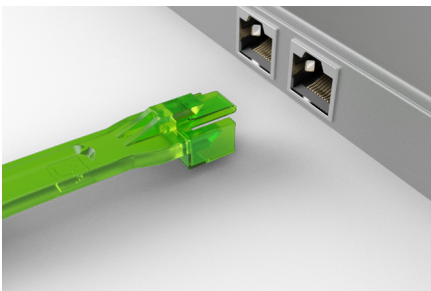
CREATE a physical barrier to unauthorised access to network ports

EXPAND security level when used together with software solutions

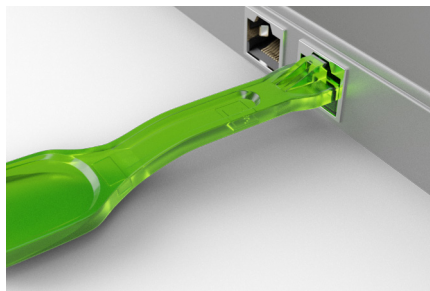
PROVIDE quick and easy installation

DESIGNED to use in combination with the key of the same colour

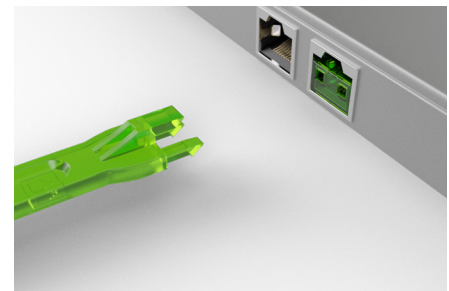
HOW THEY WORK



1. A lock is attached to the key and inserted into an RJ-45 port.



2. The sliding mechanism on the key is then released leaving the lock in place.



3. To remove the lock the key is inserted into the lock and pulled back, simple!



BLACK, RJ-45



Pack of 10 Locks & Key	No. 40470
Pack of 20 Additional Locks	No. 40471
Additional Key	No. 40630



GREEN, RJ-45



Pack of 10 Locks & Key	No. 40472
Pack of 20 Additional Locks	No. 40473
Additional Key	No. 40631



ORANGE, RJ-45



Pack of 10 Locks & Key	No. 40480
Pack of 20 Additional Locks	No. 40481
Additional Key	No. 40632



YELLOW, RJ-45



Pack of 10 Locks & Key	No. 40482
Pack of 20 Additional Locks	No. 40483
Additional Key	No. 40633



Purchase additional locks to colour code your network or use additional keys to add more administrators.

DOCKING STATIONS

Elevate your audio-video setups with Lindy docking stations, designed to optimize your AV workflow.

Lindy docking stations offer unparalleled convenience, optimizing the connection of cameras, monitors, microphones, and other AV equipment.

Streamline your workflow, simplify your connections, and unlock the full potential of your AV setups with Lindy.

DST-PRO USB4

USB4 TYPE-C PC CONNECTION, SINGLE (8K) OR DUAL (4K) DISPLAY, 1X HDMI, 1X DP, 100W PASS-THROUGH CHARGING, BC 1.2

- Supports 8K 30Hz for a single display or 4K 60Hz for two displays (Using DP MST)
- Integrated 4 port USB 3.2 10Gbps Hub
- 3x USB 3.2 Type A, 1x Type C (data); 3x USB 2.0 Type A, 1x Type C (PD 3.0, 100W 20V 5A), RJ-45, Micro-SD & SD Card Reader, Audio



No. 43372

DST-PRO 5K XT

USB-C WITH WITH TRIPLE DISPLAY (4K) OR SINGLE DISPLAY (5K), HDMI & 2x DP, 100W PASS-THROUGH CHARGING, BC 1.2

- Supports 5K@60Hz (DisplayPort) and 4K@60Hz (HDMI) for single and dual display options
- Supports 1x 4K@60Hz & 2x 4K@30Hz for triple displays
- USB 3.2 5Gbps support
- 3x USB Type A, 1x USB-C (Data), 1x USB-C (Power Delivery + Data), RJ-45, Micro-SD & SD Card Reader, Audio



No. 43349

DST-PRO UNIVERSAL

USB-C & TYPE A UNIVERSAL CONNECTION WITH TRIPLE DISPLAY (4K), 3x HDMI, 2x DP, 100W PASS-THROUGH CHARGING, BC 1.2

- Supports 4K@60Hz for single display option
- Supports 1x 4K@30Hz & 2x 4K@60Hz for triple displays
- 3x HDMI ports and 2x DP display connections
- USB 3.2 10Gbps support
- 2x USB Type A, 1x USB-C (Data), 1x USB-C (Power Delivery + Data), RJ-45, Audio



No. 43366

2 PORT KVM SWITCH DOCKING STATION

COMBINES A KVM SWITCH & DOCKING STATION, CONTROL 2 DEVICES FROM A DUAL DISPLAY KVM CONSOLE, SINGLE (4K) OR DUAL (4K30 + 1080P) DISPLAY, BC 1.2

- Allows two USB-C source devices (PC, laptop, smartphone, tablet) to be controlled from a single keyboard, mouse & dual monitor set up
- Both sources can use the connected USB peripherals (5Gbps per port)
- Supports 1x 4K@60Hz & 1x 4K30 + 1x 1080p for dual displays
- Dual USB Power Delivery 3.0 (100W + 65W)
- 3x USB Type A, 3x USB-C (1 for PD), RJ-45, Audio



Rear View



No. 43202

SPLITTERS & SWITCHES

In today's dynamic and highly competitive environment, delivering multimedia content effectively is paramount. Lindy Video Switches and Splitters are the essential tools behind this transformation. These devices enable seamless sharing of screens and resources, making them ideal for collaborative meetings and presentations, whether in the office or remote.

4 PORT HDMI 18G SPLITTER

- Splits a single HDMI 2.0 source across 4 HDMI displays
- Supports resolutions up to 4K@60Hz 4:4:4, with additional support for HDR
- HDCP 2.2 support for enhanced compatibility



No. 38236

4 PORT HDMI 18G SWITCH WITH AUDIO

- Switches between 4 HDMI 2.0 source devices connected to a single HDMI 2.0 display
- Supports resolutions up to 4K 60Hz, with additional support for HDR
- Extracts digital and analogue audio from the HDMI source device



No. 38249

2 PORT HDMI 10.2G SPLITTER

- Connects and splits a single HDMI source across two 4K displays
- Supports resolutions up to 4K@60Hz 4:2:0
- EDID Management for enhanced compatibility
- Compact design



No. 38158

2 PORT HDMI 8K60 SWITCH

- Switches between 2 HDMI source devices when connected to a single display
- Supports 48G resolutions up to 8K@60Hz, with additional support for HDR
- Flexible control via push button, IR remote



No. 38337

HDMI 4 PORT MULTI-VIEW SWITCH

- Integrates 4 Full HD 1080p signals for display on a single HDMI display
- Supports 4 viewing modes; Quadview, Picture & Picture, Dual Video and Standard
- Seamless switching between inputs/viewing modes
- Independent switching of audio and video signals



No. 38150

HDBaseT EXTENDERS

No more hassles with multiple cables – Lindy HDBaseT solutions streamline your setup by allowing you to transmit stunning 4K video, audio, data, control and power - all through a single, cost-effective Cat 5e/6 cable.

Whether you're a home entertainment enthusiast, a business professional, or an AV integrator, Lindy HDBaseT technology offers unmatched versatility and performance.

70m HDBaseT PRESENTATION SYSTEM WITH CONTROL KEYPAD



- All-in-one solution to create smart, autonomous presentation or education spaces
- Comprises a multi-AV transmitter, wall mounted control panel, and HDBaseT receiver wall plate
- Supports resolutions up to 4K@30Hz 4:4:4
- 70m HDBaseT connection allows for a simple and flexible installation with PoH (Power over HDBaseT)

No. 38288

100m CAT.6 HDMI 4K60, IR & R-232 HDBaseT EXTENDER

- Complete high performance, reliable solution for extending HDMI signals up to 100m – consists of a transmitter and receiver
- Supports resolutions up to 4K@60Hz 4:4:4, HDR, RS-232, CEC, bi-directional IR
- PoC (Power over Cable) to power the remote receiver from the transmitter
- Transmitter and Receiver modules also separately



100m Extender System (Transmitter & Receiver)	No. 38340
100m Transmitter Module only	No. 38341
100m Receiver Module only	No. 38342

70m CAT.6 HDMI 4K60, IR & R-232 HDBaseT WALL PLATE TRANSMITTER

- Neat wall plate HDBaseT transmitter that sends HDMI up to 70m
- Supports resolutions up to 4K@60Hz 4:4:4, HDR, RS-232, CEC, bi-directional IR
- PoC (Power over Cable) to power the remote receiver from the transmitter
- Can be used with the Lindy HDBaseT receiver module (No. 38214)



70m Wall Plate Transmitter	No. 38347
70m Receiver Module	No. 38214

USB SDVoE SYSTEM

CONNECT. CONTROL. CREATE.

This advanced AV solution leverages the latest in SDVoE (Software Defined Video over Ethernet) technology to create and manage extended 4K60 AV distribution installations including control, matrix, video wall and multi view over a 10G Network with no latency.

The system consists of a Controller and Transceiver modules. Multiple Transceivers can function either as Encoders or Decoders for connecting to source or display devices. The Controller manages the entire installation via a web browser that supports signal preview and drag & drop operation.

The system can be used with both fibre and copper network connections and supports PoE for scalability and ease of installation. The Transceiver module can also be integrated into 3rd party SDVoE installations.



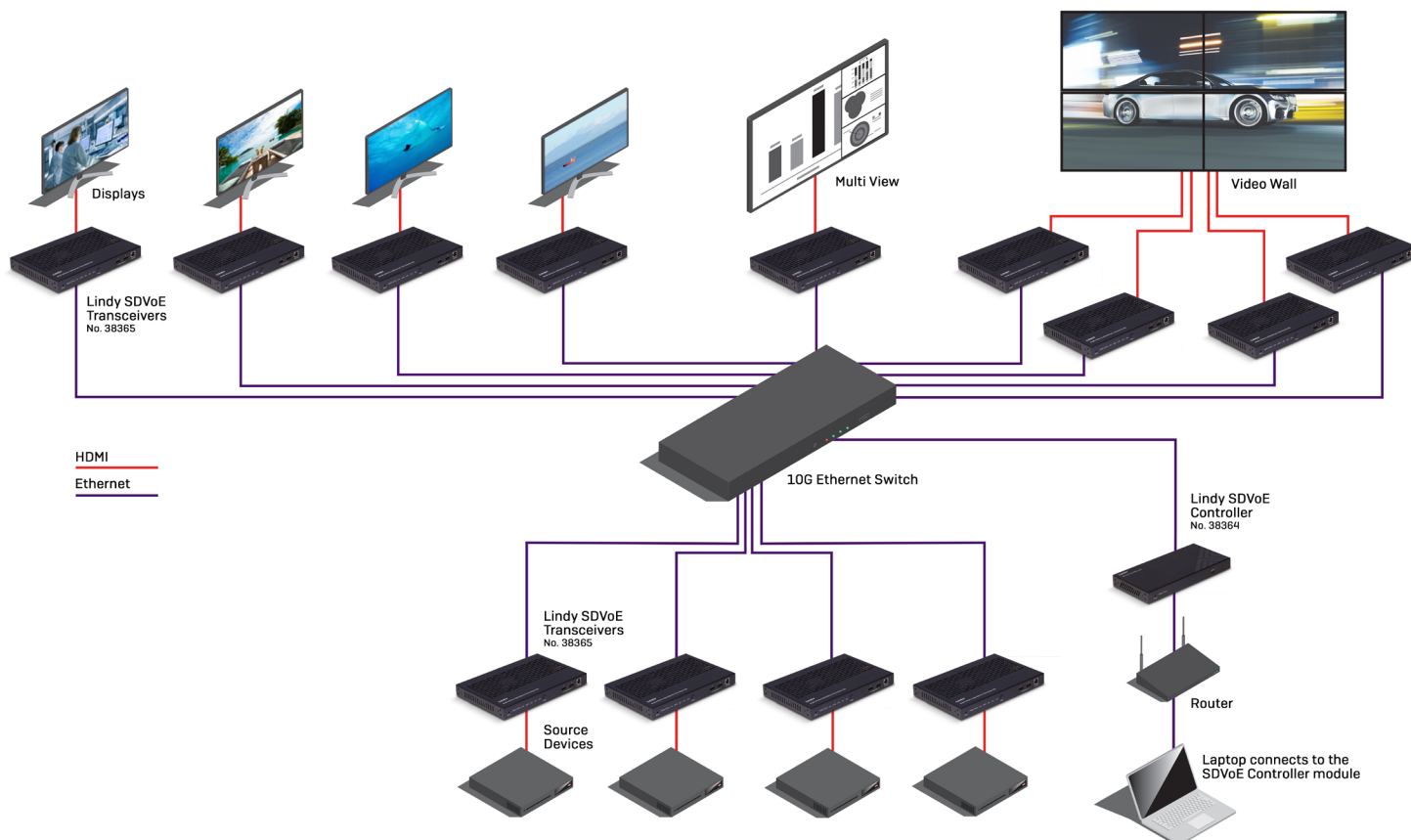
Controller Module



Transceiver Module

4K60 HDMI & USB SDVoE Controller
4K60 HDMI & USB SDVoE Transceiver

No. 38364
No. 38365



EFFORTLESS CHARGING TEN DEVICES AT A TIME!

10 PORT CHARGING STATION

Meet the solution for charging multiple USB devices – Lindy's state-of-the-art 10 Port USB Charging Station. Charge up to 10 devices, from tablets to mobile phones, all at once, ensuring no device is left behind. With up to 2.4A charging per port, even the most power-hungry devices will fuel up quickly and efficiently.

- Simultaneous charging of up to 10 tablets, mobile phones and other USB devices
- Max. 2.4A charging per port, simultaneous use of all 10 ports allows max. 1.8A charging per port
- Smart charging function adjusts the current for optimum, safe charging
- Best selling product - used in education, retail and industry



No. 73309